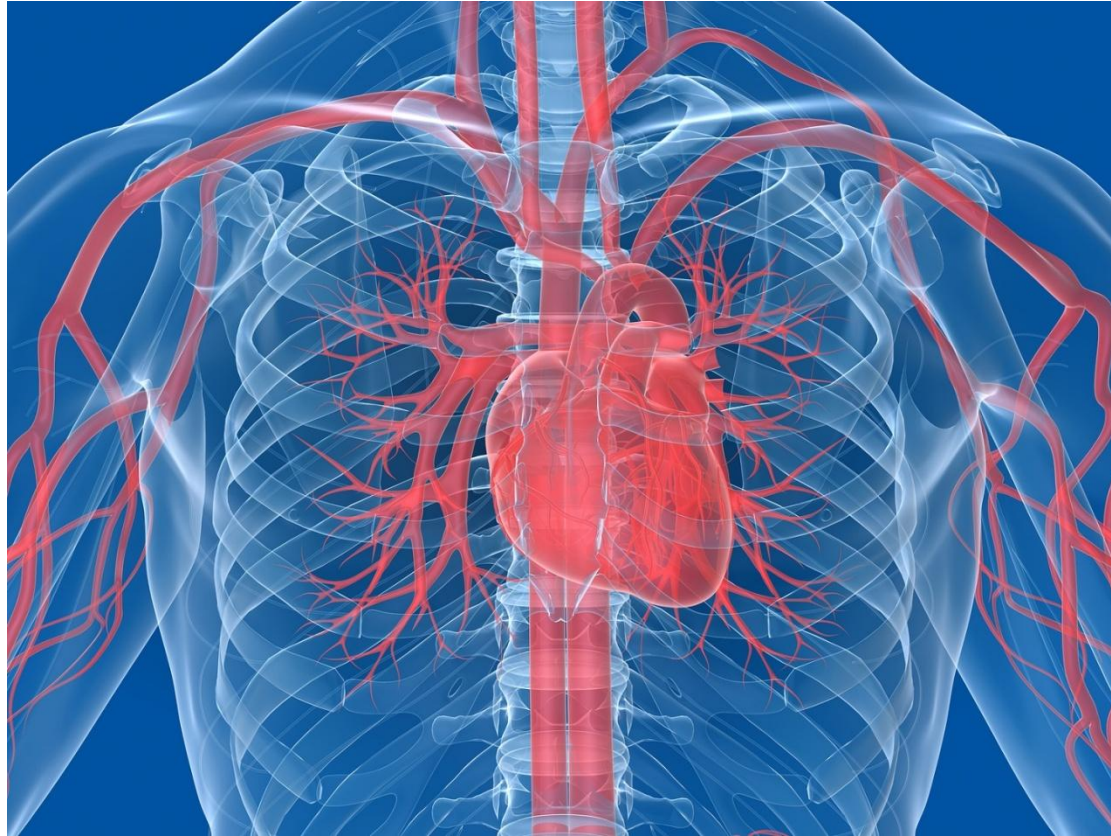


Functional Structures of Organisms

Picture Vocabulary

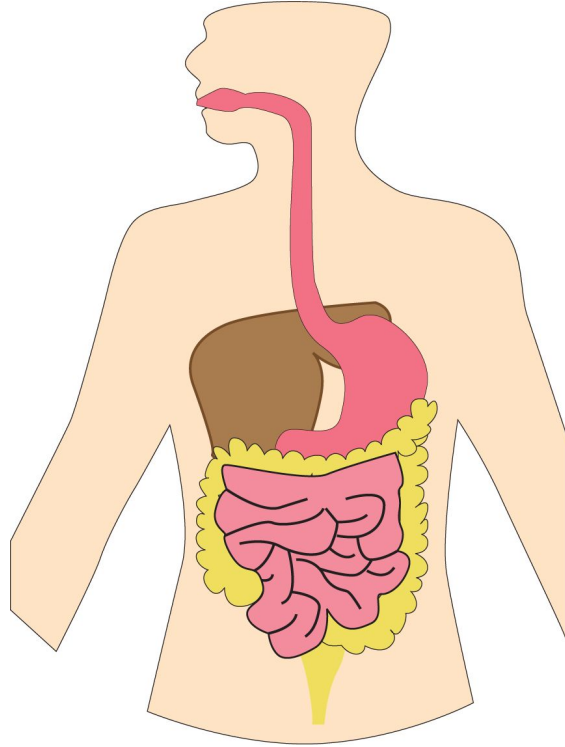
5.L 14.2 Functional Structures of Organisms

Function



What something does

Organ



A large mass of similar tissue that make up a part of an organism that performs a specific function

Physical Structures



The parts of the organism connected
by their functionality

Skeleton



Made of bones internal structure that holds the body together

Internal Skeletons



Internal support structure of an organism

Exoskeleton



External skeleton that supports and protects an animal's body

Stem



Part of the plant that takes water up to the rest of the plant